



markem·imaje

a **DOVER** company



Right consumable. Right outcome.

Ensure business continuity, control costs  
and maximize sustainability with Essentials



# You speak, we listen

“I need my plant to run with high productivity rates and costs totally under control. No exceptions!”  
Plant Manager



“Having a trustworthy raw material supplier that satisfies all regulatory and safety compliance requirements is vital.”  
Quality Manager



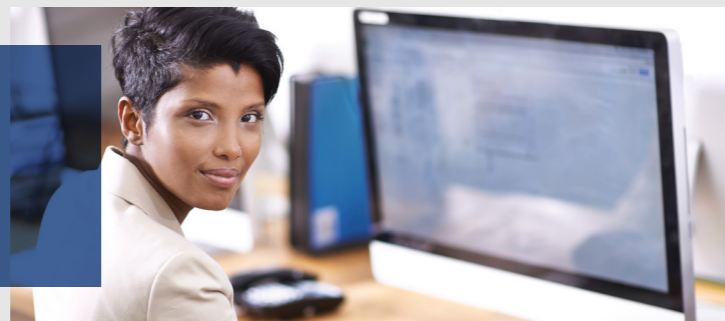
“Consumables need to work perfectly with each printer so our lines can run efficiently and my guys can focus on something else.”  
Maintenance Manager



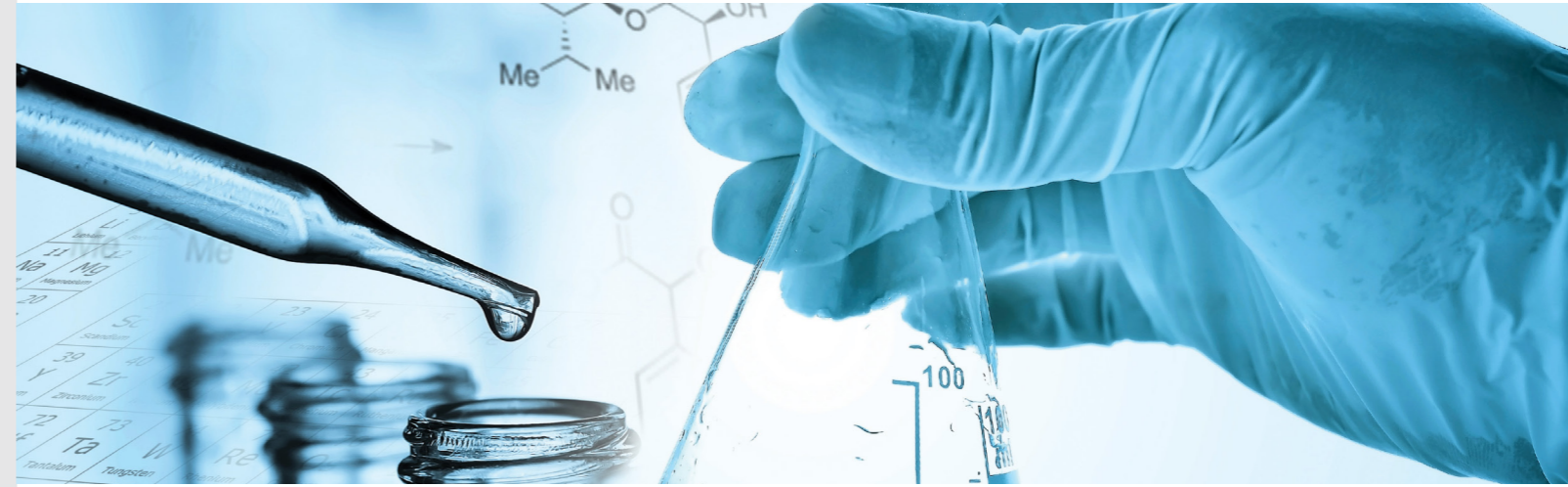
“I want consumables that are safe and easy to use.”  
Line Operator



“I expect to work with a reliable, quality supplier that offers me the best deal and service for my money.”  
Sourcing Manager



# Giving you cost-effective, quality printing. Always



For decades, Markem-Imaje has developed over 500 consumable solutions to answer your evolving needs and expectations.

We have a proven track record of anticipating and responding to the most demanding regulatory and safety requirements while minimizing environmental impact.

Our highly skilled PhD chemists deliver consumables you can trust to provide an undisputed level of performance.

Our supplies are perfectly calibrated to ensure our high-tech printers give you perfect print quality, so you scrap fewer products due to poor coding.

Genuine Markem-Imaje consumables also protect uptime by minimizing maintenance and changeovers compared with third-party supplies.

Our **Essentials** programs will not only secure your printer investment, your product and your brand, but also enhance overall productivity and optimize your total cost of ownership (TCO).

Our programs are the best choice to ensure you stay at the forefront of coding innovations and ensure your brands stay ahead of the pack.



### Business continuity

Seamless plant management and uptime via better performing supplies, worldwide.



### Cost Control

Predictable and optimized TCO through a consultative approach adapted to your business and financial models.



### Continuous innovation

Exploring new opportunities in line with your evolving needs.

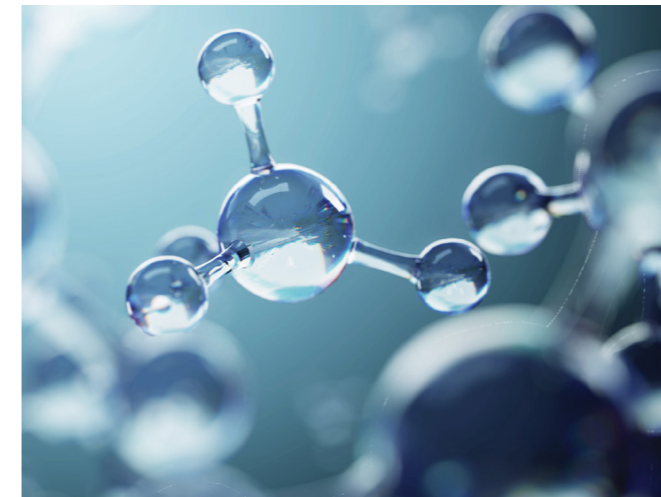


### Sustainability

Compliant supplies formulated with operator safety and environmental impact in mind.



# Committed to your essentials today and tomorrow



Production is hard enough without worrying about your printing and coding consumables.

You need them to be compliant, economical and safe while minimizing maintenance and preventing scrapped product due to unreadable codes.

You also expect codes not to rub off.

We can ease your burden by helping your plant run more smoothly and cost-efficiently while staying on top of the latest innovations in performance and sustainability in coding consumables.

Trust Markem-Imaje to secure the continuity of your business and optimize your TCO, thanks to the our Essentials programs.

These programs guarantee the right supplies are delivered to your door. And, when we say the 'right supplies', we mean quality consumables that meet your application needs, satisfy all industry and governmental compliance requirements and keep your operators and end customers safe.

We recognize, however, that each of our customers have different needs so we have made our solution scalable.

Whatever your requirements, we will be there to help you every step of the way.

Our programs are designed to reward customer loyalty and commitment with a range of benefits. Join today to discover more!

## Business continuity



**Uninterrupted supply.** Have supplies delivered according to your production schedule\*. No more waiting.

**Maximized uptime.** Minimize changeovers and unplanned maintenance caused by using third-party consumables not calibrated for our machines.

**A trusted partnership.** Benefit from consistent high quality and resolve problems quickly through our strong technical expertise and global support.

## Continuous innovation



**Perfect match.** Make the most of your printer with many options to meet your application, quality and compliance requirements.

**In line with evolving needs.** Ensure performance stays high as your demands change. We will make certain you are using the most effective consumable.

**Extensive opportunities.** Access the market's most advanced options through our proactive innovation.

## Cost control



**Optimized TCO.** Enjoy peak results and lower running costs. Markem-Imaje supplies produce better prints, cut scrap, use less resources and help printers last longer.

**Reduced inventory.** Use on-time delivery\* to improve your logistics while eliminating your risk of costly raw material scrapping due to expired stock.

**Increased predictability.** Optimize consumption with input from our team who know your business.

## Sustainability

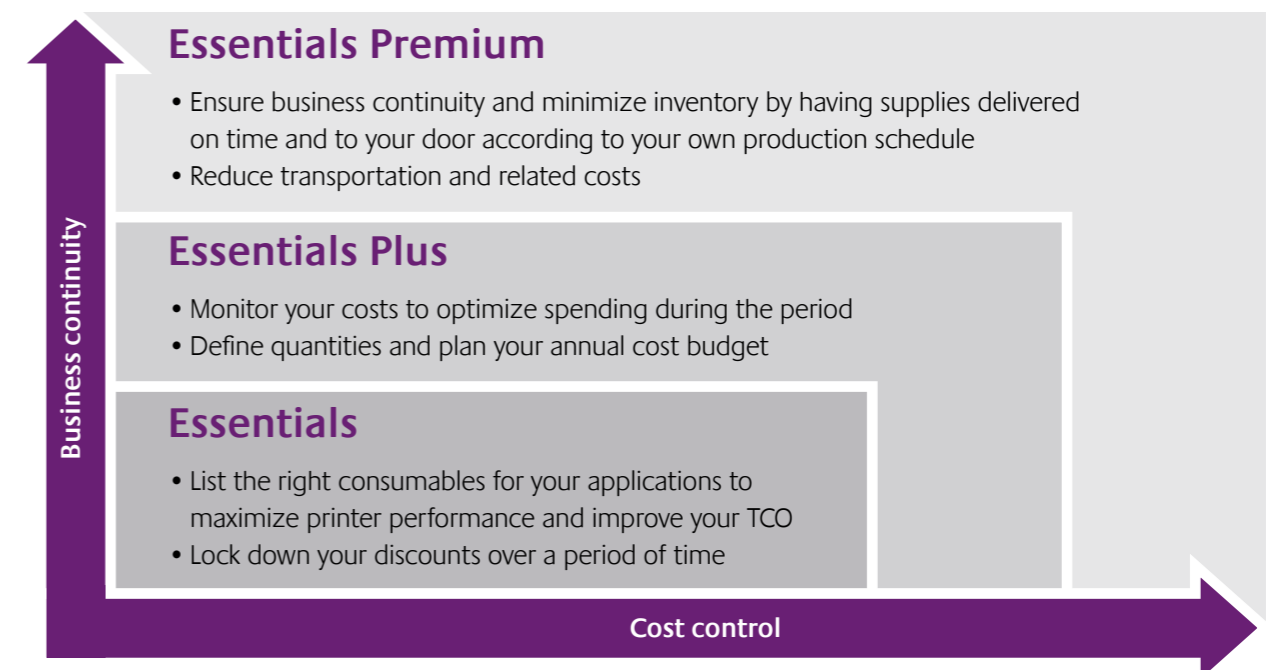


**A team of experts.** Have your compliance, regulatory and sustainability-related questions answered quickly by our experts.

**Improved Safety.** Enhance working conditions by using safer and more environmentally-friendly supplies. Keep on top of restriction news and usage guidance with updates from us.

**Waste optimization.** Manage waste more efficiently thanks to our end of life solutions and advice.

## Essentials programs tailored to your needs



\*Available with Essentials Premium






# Proven, innovative and compliant consumables which support business continuity and cost optimization throughout your entire production process



Primary coding			
			
<b>Continuous inkjet</b>	<b>Thermal transfer overprinting (TTO)</b>	<b>Thermal inkjet</b>	<b>Touch Dry® high resolution piezo</b>
9018, 9330, 94XX Series, 9750 Series, 9750 E Series, 9750 Expert Series	SmartDate® X30, SmartDate® X45, SmartDate® X65, SmartDate® X65-128	1050, 1200	5800, 5940 G
Porous surfaces, non-porous coated paper, flexible PVC, other flexible plastics, rigid plastics, metals, glass, food stuff, medicine and rubber	Flexible film packaging, metalized foil, coated paper	Flexible packaging, coated paper and non-porous and semi-porous	Non-woven fabric, flexible film, coated paper
			
			

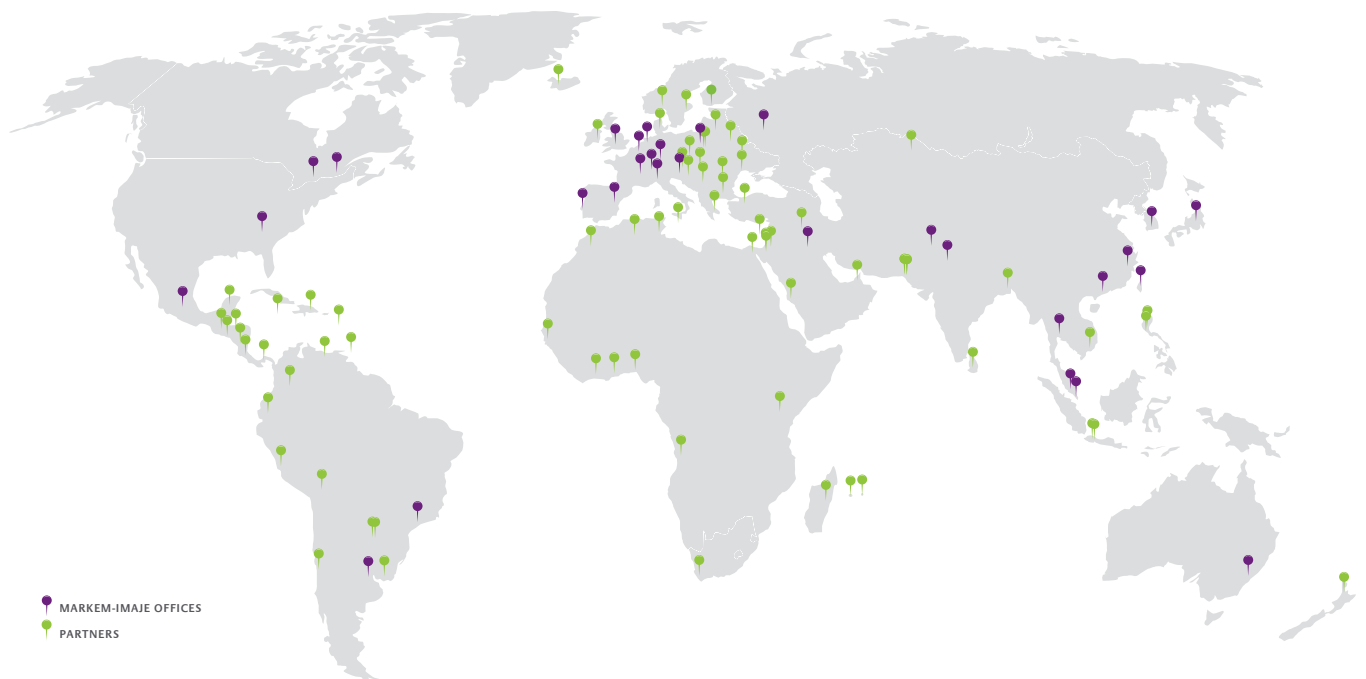
Secondary coding			
			
<b>Thermal inkjet</b>	<b>Touch Dry® high resolution piezo</b>	<b>Large character valvejet</b>	<b>Print and apply labeling</b>
1050, 1200	5800, 5940 G	4500, 4700	2200 Series
Corrugate and porous surfaces	Porous and non-porous corrugated cases, film (such as shrink or overwrap), coated cartons, polystyrene foam, and some cloth	Porous and non-porous corrugated cases, film (such as shrink or overwrap), and coated cartons	Porous and non-porous corrugated cases, film (such as shrink or overwrap), and coated cartons
			
			

Tertiary coding

<b>Print and apply labeling</b>
2200 Pallet, CimPak
Porous and non-porous corrugated cases, film (such as shrink or overwrap), and coated cartons



# About Markem-Imaje

Markem-Imaje, a wholly owned subsidiary of Dover Corporation, connects products and protects brands through intelligent identification, traceability and consumer engagement solutions. We offer the industry's most comprehensive range of marking and coding systems seamlessly integrated with trusted software, services and consumables. Over 50,000 customers worldwide partner with us to help them unlock the power of information in codes.

With decades of proven expertise provided through the most extensive global network, we empower our customers to optimize supply chain efficiencies, achieve sustainability and compliance objectives, keep products safe and engage their consumers. This is intelligence, beyond the mark.



9, rue Gaspard Monge - B.P. 110  
26501 Bourg-lès-Valence Cedex France  
+33 (0) 4 75 75 55 00  
[markem-imaje.com](http://markem-imaje.com)